

The Environmental Kuznets Curve: Recycling and the Role of Habit Formation

MYRTO KASIOUMI*

University of Guelph

Our analysis focuses on a novel theoretical model which explains the relationship between pollution and output as well as recycling and output in the context of the Environmental Kuznets Curve (EKC) framework. Our model incorporates habit formation on recycling in a circular economy model and we find that the EKC is characterized by a downward sloping curve, while the recycling output curve by an increasing curve, results which are both in agreement with the general patterns of these curves supported by the literature.

Keywords: Recycling, Pollution, Economic Growth, Environmental Kuznets Curve (EKC), Circular Economy

JEL Classifications: C610, O44, Q53

1 Introduction

The Environmental Kuznets Curve is an important topic of research as it examines how economic growth affects pollution. As environmental degradation worsens, it is important to study how the improvement and the growth of the economy affects the environment. Furthermore, even though there is a rich literature on the EKC, the literature on the relationship between recycling and economic growth is quite limited and most contributions are theoretical in nature and they rely on a circular economy model framework. For example, George et al. (2015) found that the EKC does not hold in a closed economy with two factors of production, namely a recyclable input and a polluting resource. Their model suggests that economic growth does not have a positive effect on environmental quality as the EKC would suggest, and as the economy becomes richer, the environmental degradation increase. Kasioumi and Stengos (2021) extended George et al. (2015) by relaxing its main assumptions, namely that the two inputs are independent and that the recycling input is costless, and reversed its results by confirming the presence of the EKC to be an inverted U curve and the corresponding curve for abatement to be an increasing curve as in Selden and Song (1995).

Lately, environmental economists are also focusing into habit formation models, as habits can also affect the way we are treating the environment and general environmental quality. Habit

*Corresponding author: mkasioum@uoguelph.ca

© 2021 Myrto Kasioumi. Licenced under the Creative Commons Attribution-Noncommercial 4.0 Licence (<http://creativecommons.org/licenses/by-nc/4.0/>). Available at <http://rofea.org>.

formation in economic models is a topic that has found a lot of attention in the past twenty years as it offers a way that may result in different decision patterns. It concerns mainly growth models and more recently it has been added to environmental models too. Löfgren (2003) were the first to introduce habit formation in a macroeconomic environmental model. Under their framework, habit formation is added in the environmental quality, in a model where utility is affected by two consumption goods, one of which has a negative externality to the environment and the environmental quality. Schumacher and Zou (2006) introduced habit formation on pollution in an overlapping generations (OLG) model with pollution, which is differentiated by the usual OLG models with pollution since households' utility is now affected by past pollution levels. That leads to different results not only for the evolution of pollution and capital level over time, but also for the utility level. If generations care more about the pollution level during their lifetime than the next generations', then the pollution and capital level in the steady state is higher than simpler models without habit and vice versa. Ikefuji (2008) used a model where pollution and habit stock of previous consumption levels offers disutility to the agents while consumption offers utility, and tried to analyze how habit formation may change the decisions about pollution abatement activities that households would undertake otherwise, adding technological progress in abatement as well. If individuals care a lot about their habits, the only way to maintain growth is by having a quick technological progress. Once again, we see that habit formation is a key factor that affects the steady state of an economy and which changes the optimal level of the main variables of the models, compared to simpler models which aren't affected by previous habit stock on either pollution or consumption. That makes habit formation an important aspect that we should take into account when we are studying growth and environmental models.

In the present paper we will try to investigate the relationship between recycling and output as well as the relationship between pollution and output (EKC) using a theoretical model that assumes a circular economy with habit formation on recycling, something that has not been discussed in the literature so far. Our paper constitutes an extension of the theoretical work of Kasioumi and Stengos (2021), combining elements of the circular economy model of George et al. (2015) with the habit formation framework of Ikefuji (2008), in order to investigate the effects that habit formation has on recycling and pollution.

The structure of the paper is as follows: in the next section we offer a brief literature review on habit formation, the EKC, and recycling. In section 3 we discuss the model we are using to analyze the relationship between pollution and output as well as recycling and output under habit formation. That includes the main assumption, functions and the different laws of motion we used in our solution. Section 4 presents the methodology we based our solution on and Section 5 has our results and plots showing how the relationship between our main variables turned out to be. Finally, we present our concluding remarks on Section 6 which is followed by the Appendix where we discuss a more detailed solution of our model.

2 Literature review

2.1 Habit formation

Habit refers to a decision or action taken automatically and is inspired by previously taken activities which offer pleasure or happiness. It is the routine of actions that one subconsciously undertakes, repeated in a regular basis like brushing one's teeth (good habit) or smoking (bad habit). The way that habits are formed is based on four steps: cue, craving, response and reward, which are followed by our brain in that order every time. Habits can affect our everyday life and they concern the psychological, economic, health and every other aspect of one's life. Habit formation is a topic mainly discussed in psychology which tries to analyze and understand in depth how habits are formed and how they can affect one's behaviour and decisions. Lally et al. (2010) found that forming habits vary between different individuals and it can take between 18 to 254 days. Wood and R nger (2016) stated that forming habits might lead to unwanted consequences as well, as people start relying on their habits which eventually may lead to stress and addictions through the reduction of the availability of people to guide their behavior. Sometimes, psychology of habits can be combined with other fields of study like health and economics and offer interesting insights. For example, Gregory and Leo (2003) used habit formation to test how past attitudes can affect the future water consumption. They conclude that households with lower habits on consumption of water tend to be more aware of water conservation issues, which leads to lower water usage in the future as well. Habit formation is a topic which has also effects on the health field, as molding someone's behavior and habits, can lead to beneficial outcomes especially for cases of addiction to harmful substances. Gardner et al. (2012) stated that habit formation is a useful tool which can be used from doctors for enhancing healthier habits of their patients, sine it is simple to implement and has unique beneficial long run effects. Later, Gardner and Rebar (2019) also showed that the effect that habit formation has in behavior change mechanism, like interventions, is very promising as it can fortify the new behavior against previous destructive ones.

Habit formation is also used in economic models and specifically it can be used as a characteristic of consumption. Since habits are actions taken automatically, they can affect our decisions which can affect our preferences and our decisions. Some of the most representative papers studying economic growth under a theoretical framework with habit formation are the following. Alvarez-Cuadrado et al. (2004) introduced inward looking preferences (habit formation economy) into a macroeconomic model and compared it with the corresponding conventional model (without habit formation). They showed that under this framework, households not only try to maximize their consumption as in any other macroeconomic model, but also the rate that their consumption changes. That however leads to differences in the consumption and savings decisions of the households compared to the simple model, because habits make individuals unable to react to shocks. Chen (2007) assumed an endogenous growth model in which

households form consumption habits in combination with other already existing habits. This economy ends up having two different balanced growth paths, one with low consumption and high economic growth, and one with the opposite characteristics that is high consumption and low economic growth. However, even though these two steady states are saddle points locally, they cannot be a Pareto equilibrium path. Valente (2006) added habit formation in consumption, and negative pollution externalities due to production, on the neoclassic Ramsey growth model and found that the optimal level of consumption and capital is being reduced with the addition of habits.

2.2 The Environmental Kuznets Curve

The Environmental Kuznets Curve is an important topic as it examines how economic growth affects pollution. Grossman and Krueger's (1991) paper was the first to explore the empirical relationship between pollution -specifically air quality- and economic growth. They found that an inverse-U curve can best characterize the relationship between the two previously mentioned variables, with the turning point to be between 4.000 to 5.000 US dollars. Subsequently, Grossman and Krueger (1995) using again data for air and water quality for countries from all over the world, examined the relationship between growth and pollution. They confirmed the presence of the EKC to be an inverse-U curve between GDP per capita and pollution with a turning point at an income level less than 8.000\$. Esteve and Tamarit (2012) also showed that the EKC holds for Spain, using an empirical approach based on a threshold time series model. Cole et al. (1997) introduced more environmental indicators than most studies used until then and found that the inverse-U shape of EKC was only supported by local air pollutants, while pollutants of a more global nature have really high turning points with large standard errors. This result is also confirmed by Stern (1998). Later, Roca et al. (2001) found that the inverse-U curve should not be generalized neither for all type of emissions nor for global pollutants, but rather for some local ones.

The papers presented so far found evidence that either fully or at least partially supported the EKC following an inverted U pattern. However, there are other studies that refute entirely the evidence of the inverse-U shape and support instead an N curve pattern. An N-shaped curve was suggested by De Bruyn and Opschoor (1997) to be a more appropriate shape that describes the relationship between pollution and economic growth using panel data for European countries. Harbaugh et al. (2002) using a more updated version of the dataset on air pollution than that of Grossman and Krueger (1995) found that the inverse-U relationship was not supported anymore. Similarly, Dinda (2004) also concluded that the EKC is better characterized by an N-shape curve. The literature so far assumed that the initial increase in the pollution is temporary while the decrease of it is permanent. This result is debatable as the decrease of the pollution after a certain level of income per capita may not be permanent, which leads to an N-shape

curve for EKC. Most papers have used emission levels as a pollution index even though global environmental degradation is assumed to be a better factor for global EKC. Moreover, although country specific method are more appropriate for the examination of the EKC hypothesis, the most popular analysis used in most of empirical studies was based on cross-sectional data.

2.3 Recycling

The literature on recycling in economics is quite limited and all contributions are theoretical in nature. As we mentioned before, EKC is a topic with great importance as it examines environmental pollution from an economic point of view. However, it is also important to examine if economic growth has the potential to improve environmental quality. In other words, we should examine if and how economic growth can affect recycling levels which in turn will be beneficial for the environment. Selden and Song (1995) using a simple growth model and assuming that the utility of the representative agent is affected positively by consumption and negatively by pollution levels, derived the shape of the EKC to be an inverted U curve and that the corresponding curve for abatement to be a J shape curve. An additional study that dealt with recycling and growth is the paper by Di Vita (2001), which showed that economic growth is higher when one introduces materials in production which come from waste recycling, compared to the case that an economy uses only capital, labour and technology to produce its final good. They showed that developed countries increase their welfare by selling recyclable waste to developing countries which can produce secondary materials cheaper. Pittel (2006) introduced a new EKC model which varies in two main aspects from the standard EKC model. The model assumes a closed economy which functions under a material balance condition, that is material cannot be destroyed and it can only be converted through recycling. What she found is that EKC might arise during the transition to the long run balanced growth path.

3 The circular economy model with habit formation on recycling

We are following the structure of Kasioumi and Stengos (2021), which is based on the theoretical model of George et al. (2015), but with some substantial differences on their assumptions. George et al. (2015) assumed that the two factors of production are independent, an assumption hard to justify in a real economy, while hence Kasioumi and Stengos (2021) assumed that our decision for recycling at each period of time is affected by how much we care about the environment. In other words, the intensity of recycling (τ) is high when we care a lot about the environment and low when we care less about it. Our current model will combine the model of Kasioumi and Stengos (2021) and Ikefuji (2008), to capture the effects of habit formation on recycling in a closed circular economy. In that way we will approach in a better way the real economy and the way that agents think and take actions, giving a more meaningful inter-

pretation to our results. Our paper is different from other studies, since we incorporate habit formation in recycling, something not done in the literature so far.

Consider a centralized closed economy with a continuum of identical agents and a benevolent social planner. Without loss of generality, we assume that the number of agents equals one. The agent cares a lot for the state of the environment and so he derives utility from recycling (R_t) as well as from consumption (c_t). On the other hand, he derives disutility from pollution (P_t) since it affects the environment negatively. Last but not least, he derives utility from the comparison of his current recycling level to his habit stock (h_t), if the current consumption is higher than the habit stock, and disutility if it is lower. The social welfare function of this economy is given by the following form:

$$U = \int_0^{\infty} e^{-\rho t} u(c_t, R_t, h_t, P_t) dt \quad (1)$$

where $u(c_t, R_t, h_t, P_t)$ is the instantaneous utility function and ρ is the rate of time preference. For the first and second order partial derivatives of the above utility function u we assume that: $u_R > 0$, $u_c > 0$, $u_P < 0$, $u_h < 0$, $u_{PP} < 0$, $u_{cc} < 0$, $u_{RR} < 0$, $u_{cP} > 0$, $u_{cR} < 0$ and $u_{ch} > 0$ ¹

The social planner wants to maximize the discounted present value of the future utility stream $u(c_t, R_t, h_t, P_t)$ given by equation (1). To make our analysis tractable we further assume an isoelastic utility function described by the following form:

$$u(c_t, R_t, h_t, P_t) = \frac{(c_t R_t h_t^{-b} P_t^{-\epsilon})^{1-n} - 1}{1-n} \quad (2)$$

where $\epsilon > 0$ is the elasticity of utility with respect to pollution, $n > (\epsilon + 1)/\epsilon$ is the inverse of the elasticity of intertemporal substitution² and $b \in [0, 1]$ shows the importance of the habit

¹The first order conditions imply that both recycling (R) and consumption (c) increase the utility of the consumer, while pollution (P) and habit stock (h) reduce their utility level. In addition, the second order conditions show that we face diminishing marginal effects for consumption (u_{cc}), pollution (u_{pp}), and recycling (u_{RR}). In other words, every additional unit of pollution reduces the utility level but with a diminishing rate and every additional unit of consumption increases the utility level but with a diminishing rate, something that holds for recycling as well. The assumption that $u_{cP} > 0$ shows that when pollution increases, the utility received from consumption is higher. That can be explained as in order to be able to consume, production should first happen, something that leads to higher pollution levels. In addition, pollution increases from consumption, so higher the above assumption also means that when pollution increases that means that consumption increases as well, something that increases the utility level. Also the assumption of $u_{cR} < 0$, which shows that the utility received from consumption is lower when we increase recycling, can easily be explained as well. In that case, our utility level coming from consumption is lower because now the utility is increased by recycling. That means that consumption and recycling can act as substitute goods. Finally, $u_{ch} > 0$ means that when habit is higher, then recycling is higher, leading to higher production of the recyclable input and higher production of the final good, hence higher consumption.

²According to Alvarez-Cuadrado et al. (2004), Alonso-Carrera et al. (2005) and Ikefuji (2008), n should

stock. Rewriting the term Rh^{-b} as $R^{1-b}(R/h)^b$, the explanation of b changes to the geometric weight of relative recycling to the habit stock. As b increases, the agent attaches more importance to R/h , which means that if the current recycling level is smaller than the past recycling, then the disappointment the agent receives is increased.

The habit stock of recycling can be described as the weighted average of past recycling levels and is given by the following formula:

$$h_t = m \int_{-\infty}^t R_s e^{-m(t-s)} ds \tag{3}$$

where $m > 0$ is the discount rate of past recycling levels and $s > 0$ is the total number of $t - 1$ years that we are doing recycling or alternatively, the years of past recycling. The smaller the value of m , the higher the degree of persistence of habitual behavior in recycling. In other words, when the agent chooses the current level of recycling, she attaches great importance to her past consumption levels. Differentiating the habit stock formula with respect to time, gives us the law of motion of the habit stock, which is described as:

$$\dot{h} = m(R_t - h_t) \tag{4}$$

In our economy there is a unique final good q which is produced using two factors of production: x which is the recyclable input and z which is the environmentally polluting input. We can assume an input like glass, plastic, or paper for the recyclable input, while the polluting input can be any extracted resource like oil, natural gas, or coal. Both factors of production evolve over time and we also assume that they are substitutes in production³. The production of the final output q is characterized by a concave production function ϕ , which is affected only by the above two factors of production and it is given by the following form:

$$q_t = \phi(x_t, z_t) \tag{5}$$

We assume for convenience and simplicity to have a Cobb - Douglas production function which takes the following form: $\phi(x_t, z_t) = Ax_t^{(1-\gamma)}z_t^\gamma$, where A is a constant technology factor that affects production.

The final good can be used to employ the polluting input or it can be consumed. The final output that is not used, accumulates as waste which can either be recycled or not. The recyclable

be greater than one in order to have an interior solution. In our case, the assumption that $\epsilon > 0$ and $n > (\epsilon + 1)/\epsilon$, lead to the fact that $n > 1$ as well, pointing out that our model will have an interior solution.

³That means that there are some marginal cross effects which affect the final result of this model, something ignored by George et al. (2015) but included in Kasioumi and Stengos (2021).

proportion of the waste stock S is β , while the proportion which cannot be recycled is $(1 - \beta)$. In addition, the decision on how much to recycle is affected by the importance we attach to the environment and the habit we have of previous recycling, hence there is another parameter that affects the recycling level of each period, τ , the intensity of recycling. For higher intensity, the agents puts more weight on recycling and the environment, so they increase recycling in order to increase their utility. In that case, the consumption level (the other variable that increases utility) falls, since the agents choose to increase their utility by recycling. On the other hand, for lower τ the agents do not care so much about recycling and the environment, so they increase their utility through consumption, and the recycling level falls with time. Thus, the entire recycling level that takes place in each period is equal to $\tau\beta S$. Taking into account all the previous assumptions, the low of motion of the waste accumulation can be described by the following differential equation:

$$\dot{S} = \phi(x_t, z_t) - c_t - z_t - \tau\beta S_t \tag{6}$$

Another main assumption of the model is that part of the waste stock is being recycled and is transformed into a useful factor that can be used in the production of the final output. In other words, the recyclable resource x is equal to the total recycling of the waste stock that takes place each period ($x_t = R_t = \tau\beta S_t$). By substituting this into equation 2, 4, 5, and 6 we get the following equations, with the last one to characterize the dynamics of waste accumulation in the economy:

$$u(c_t, \tau\beta S_t, h_t, P_t) = \frac{(c_t \tau\beta S_t h_t^{-b} P_t^{-\epsilon})^{1-n} - 1}{1-n} \tag{7}$$

$$\dot{h} = m(\tau\beta S_t - h_t) \tag{8}$$

$$\phi(x_t, z_t) = \phi(\tau\beta S_t, z_t) = A(\tau\beta S)^{(1-\gamma)} z_t^\gamma \tag{9}$$

$$\dot{S} = \phi(\tau\beta S_t, z_t) - c_t - z_t - \tau\beta S_t \tag{10}$$

Apart from the waste accumulation path, we also have the pollution accumulation path of this economy. Part of the environmental pollution comes from the use of the polluting resource z_t in the production procedure. Particularly, we assume that each unit of this input leads to θ units of pollution. Moreover, the pollution level increases by the part of the waste stock that cannot be recycled which generate polluting emissions in a one for one form, that is by $(1 - \beta)S$.

In addition, the consumption of the final good is producing ξ units of pollution⁴. Last but not least, we assume that the stock of pollution is automatically reduced at each period by a rate δ , since the environment is assumed to be self-renewed. Thus, the law of motion of the pollution accumulation in this economy can be described by the following differential equation:

$$\dot{P} = \theta z_t + (1 - \beta)S_t + \xi c_t - \delta P_t \quad (11)$$

4 The optimal growth in the economy

The social planner wants to maximize the social welfare function (equation 1), subject to the three laws of motion that affect our economy, that is the law of motion of habit stock of recycling, of waste and pollution (equation 8, 10, and 11 respectively). To solve our problem we are using the following Hamiltonian function, taking into account that habit stock (h), pollution (P) and waste (S) are the state variables, while consumption (c) and the polluting input (z) are the control variables.

$$H = e^{-\rho t} u(c, \tau\beta S, h, P) + \lambda[\phi(\tau\beta S, z) - c - z - \tau\beta S] + \mu[\theta z + (1 - \beta)S + \xi c - \delta P] + \omega[m(\tau\beta S - h)] \quad (12)$$

where λ , μ and ω represent the shadow prices of the constraints we have in our model. Particularly, λ is the shadow price of the waste accumulation path, μ is the shadow price of the evolution of pollution and finally ω is the shadow price of the law of motion of habit stock. The first order conditions of the above problem are given by the formulas below:

$$H_c = e^{-\rho t} u_c - \lambda + \mu\xi = 0 \quad (13)$$

$$H_z = \lambda(\phi_z - 1) + \mu\theta = 0 \quad (14)$$

or

$$\mu = \lambda \left(\frac{1 - \phi_z}{\theta} \right) \quad (15)$$

⁴For example we can assume that the final good that this economy produces is air conditioning, the consumption of which affects the environment negatively.

$$H_S = \lambda[\tau\beta(\phi_x - 1)] + \mu(1 - \beta) + \omega m\tau\beta + e^{-\rho t}\tau\beta u_x = -\dot{\lambda} \quad (16)$$

$$H_P = e^{-\rho t}u_P - \mu\delta = -\dot{\mu} \quad (17)$$

$$H_h = e^{-\rho t}u_h - m\omega = -\dot{\omega} \quad (18)$$

Differentiating equation 13 with respect to time (t) and substituting 13 for u_c as well as 22 for $\lambda e^{-(\rho t)^5}$, we are able to find the Euler equation for consumption, which is described by the following equation:

$$\frac{\dot{c}}{c} = \left(-\frac{u_c}{u_{cc}c}\right)\left(\frac{\theta}{\theta - \xi(1 - \phi_z)}\right)\left[\frac{\dot{\mu}}{\lambda}\xi - \frac{\dot{\lambda}}{\lambda} + \rho\left(\frac{\mu}{\lambda}\xi - 1\right)\right] - \frac{u_{cP}}{u_{cc}c}\dot{P} - \frac{u_{cx}}{u_{cc}c}\tau\beta\dot{S} - \frac{u_{ch}}{u_{cc}c}\dot{h} \quad (19)$$

where $\left(-\frac{u_c}{u_{cc}c}\right)$ is the intertemporal elasticity of substitution and it is equal to $1/n$, \dot{S} and \dot{P} are characterized by equations 10 and 11 respectively, while the terms which include the shadow price of pollution and waste are given in the Appendix .

Using the above optimality conditions, we are also able to construct the optimal growth path for the polluting resource. By differentiating equation 14 with respect to time (t) and substituting 15 for θ , we get the following equation:

$$\dot{z} = \left\{\left(\frac{\dot{\lambda}}{\lambda} - \frac{\dot{\mu}}{\mu}\right)(1 - \phi_z) - \tau\beta\dot{S}\phi_{zx}\right\}\frac{1}{\phi_{zz}} \quad (20)$$

where \dot{S} is characterized by equation 10 and the terms which include the shadow price of waste and pollution are presented in more detail in the Appendix, where we also include the growth path of the polluting resource z as well as the steps which we followed to find it.

The solution to the system of the five differential equations described by equations 8, 10, 11, 28, and 29 allows us to find numerical values for our main variables over time, that is for waste (S), pollution (P), habit stock of recycling (h), consumption (c) and the polluting factor of production (z)⁶. Having found them, we are then able to calculate the recycling level

⁵A more analytical solution can be found on the Appendix where we present all the equations we used to solve our problem and we also present the final version of the Euler equation for consumption. Hence, equation 21 till 29 are included there as well.

⁶Since the system of differential equations we have in our model consists of non linear differential equations, we have to use a computing environment to help us solve it. For that, we used the programming platform MATLAB. In the Appendix we present a table with the parameter choices that generated the graph. The results are robust to various combinations of the chosen values.

($x = R = \tau\beta S$) and the output level ($q = A(\tau\beta S)^{1-\gamma}z^\gamma$) over time, since τ, β, A and γ are all parameters for which we can set the values. In the following plots we present our main results, which show the relationship between pollution and output (EKC), recycling and output (EKC with abatement), pollution and consumption, recycling and consumption, as well as consumption and recycling.

5 Results and Discussion

Figure 1: Environmental Kuznets Curve

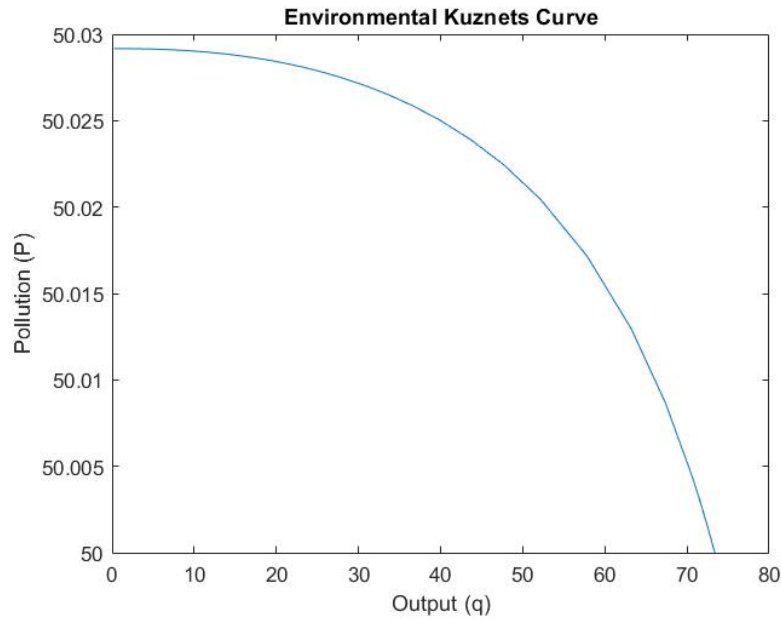
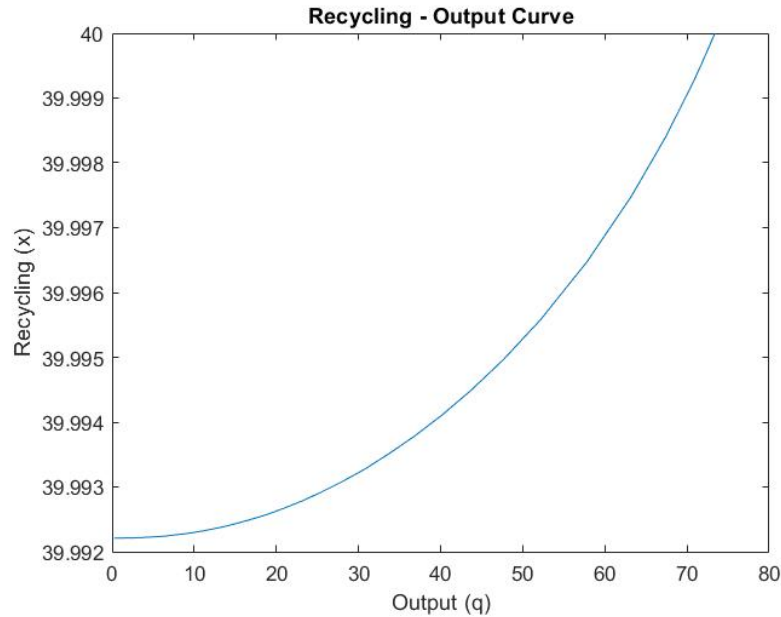


Figure 1 shows the basic EKC which is characterized by an inverse U curve in the literature. In our case, we see that the pollution level falls over time when output increases. Additionally, Figure 2 shows the relationship between recycling and output which is characterized by a J curve in the literature and in our case, it is characterized by an increasing curve which agrees with the results of Kasioumi and Stengos (2021) and Kasioumi and Stengos (2020). We can clearly see that the curve characterizing the EKC is the exact opposite of the one that characterizes the curve between recycling and output, as EKC is the downward sloping part of an inverse U curve while the recycling output curve is the increasing part of a U curve. That result confirms our intuition as well. In other words, because recycling is a way of pollution abatement it can be considered as the opposite measure of pollution. One reason that this might be

Figure 2: Recycling - Output Relationship



the case is the fact that as output increases, economies become richer and they are able to fully cover their basic needs in terms of production, so then they are able to move on and cover some initially secondary needs in terms of recycling.

Under a similar framework but without a habit stock in recycling, Kasioumi and Stengos (2021) found that as output increases, pollution increases initially up to a point, after which the pollution starts to fall, in other words confirming the inverse U curve for the EKC. In addition, it was found that the relationship between recycling and output is almost linear and increasing. Our results in this paper are close to the results of Kasioumi and Stengos (2021) but with some substantial differences which arise due to the addition of the habit stock in recycling. First of all, we can see that the rate that recycling increases with output is higher in the present paper since the curve is not linear. Moreover, the EKC is now characterized by a downward sloping curve only, in comparison to the inverse U curve of Kasioumi and Stengos (2021).

On this point, we want to point out the importance of the parameters β and τ and show how they are related in that specific model. For that reason we provided a sensitivity analysis regarding those two parameters, the results of which are available in the following plots (Figure 3 to Figure 7). A high β allows the economy to choose a low τ , which means that as the recyclable proportion of waste increases, we need smaller intensity of recycling to be able to get a combination of lower pollution and higher recycling. In addition, the sensitivity analysis shows that our model produces the same results under different combinations of β and τ .

Figure 3: Different τ under $\beta = 0.05$

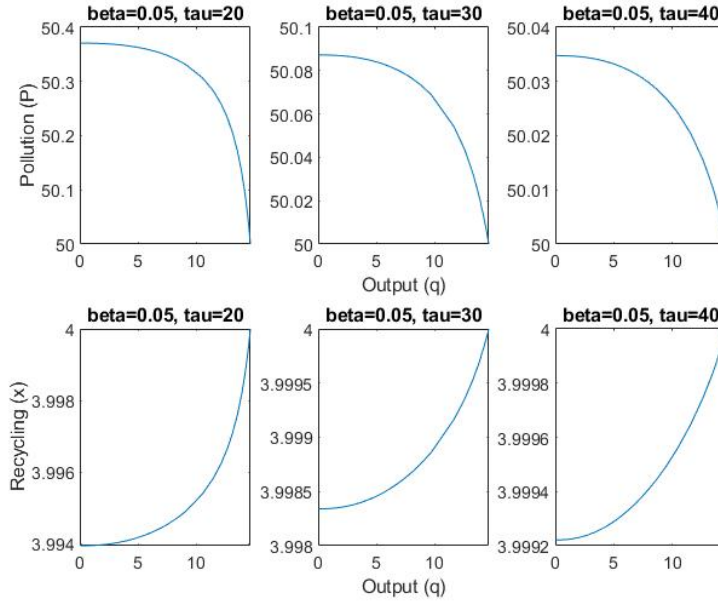


Figure 4: Different τ under $\beta = 0.1$

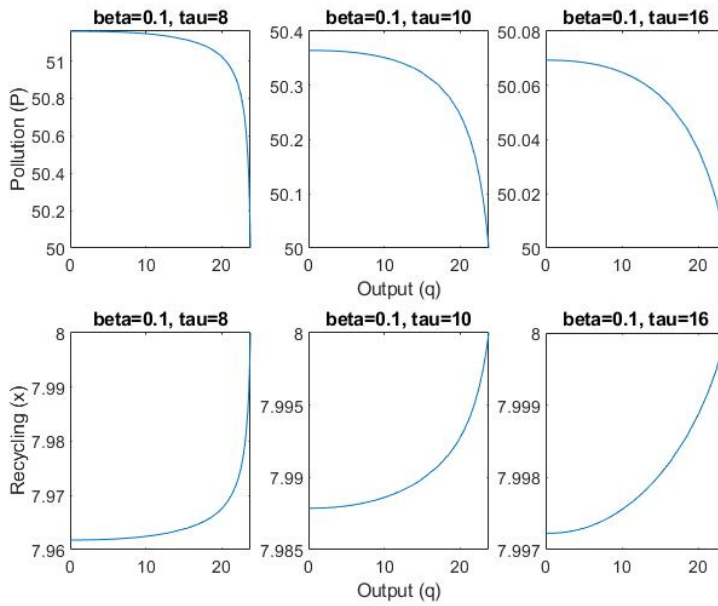


Figure 5: Different τ under $\beta = 0.2$

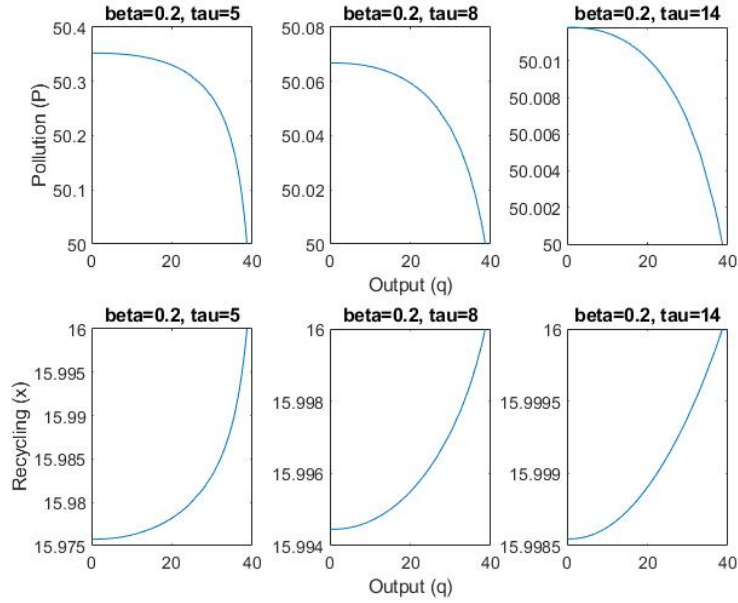


Figure 6: Different τ under $\beta = 0.3$

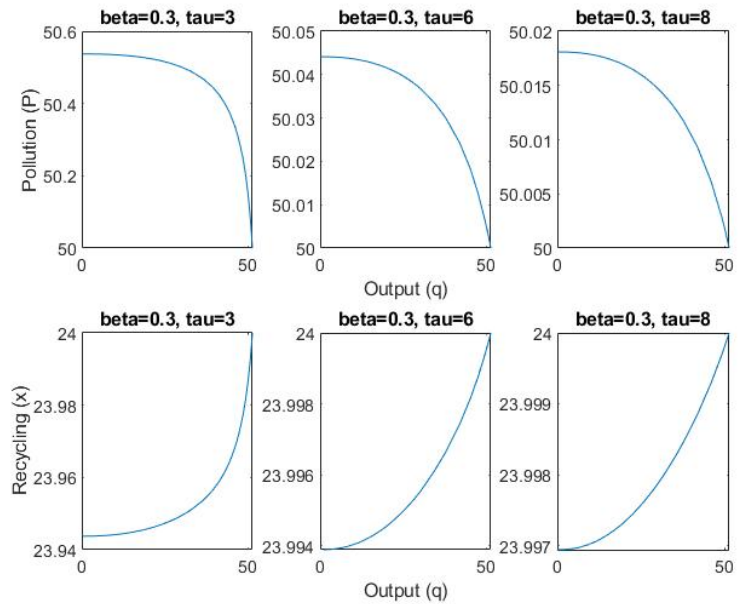
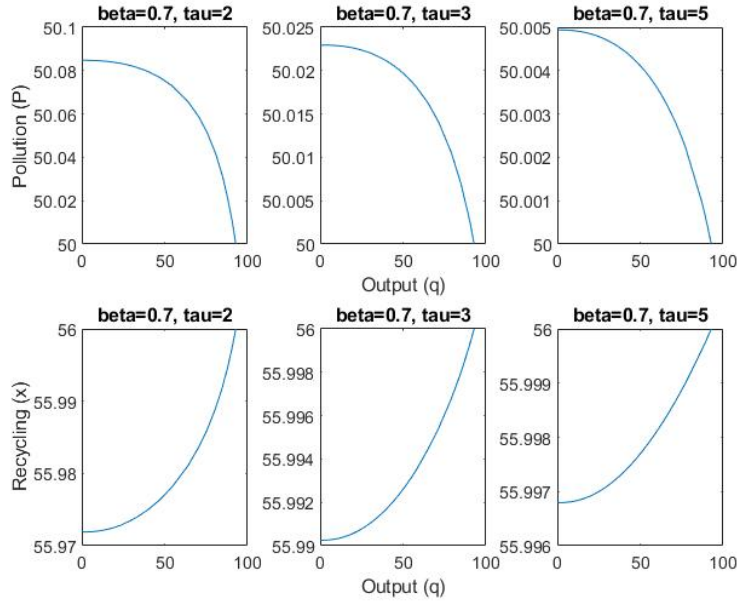


Figure 7: Different τ under $\beta = 0.7$



6 Conclusion

In an effort to model an economy with more realistic characteristic, we included a variable that describe people and their way of thinking in a more accurate way, which is habit formation. Habits are regularly repeated routines of behaviours that people do subconsciously. They affect decisions and preferences and for those reasons habit formation has been introduced in many economic models.

Our analysis describes a closed circular economy in which there is one final good that is produced by a recyclable and a polluting input. Agents receive utility from consumption and recycling while they receive disutility from pollution. Additionally, they have a habit stock of previous recycling levels which offers them higher utility when their current consumption is higher than their habit stock. Our model combines the closed circular economy model with recycling of Kasioumi and Stengos (2021) and the habit formation theory of Ikefuji (2008). However, we offer a new framework, since we include habit formation on recycling and not consumption which is the usual.

Our main purpose with this study is to investigate the relationship between pollution and output (EKC) as well as recycling and output, in addition to a comparison between the results of this study and the one of Kasioumi and Stengos (2021). We find that the EKC is characterized by a downward sloping curve while the recycling-output curve by an increasing curve which confirms our expectations. Recycling is a mean of environmental abatement so it can

be considered as the opposite variable of pollution, which leads to the opposite curve of the EKC we found here. Many papers in the literature find an increasing or even a J curve for the plot of recycling and output (see Kasioumi and Stengos (2021), Kasioumi and Stengos (2020), Selden and Song (1995)) and an inverse U curve for the EKC (see Grossman and Krueger (1995), Grossman and Krueger (1991), Dinda (2004) for specific air pollutants). Kasioumi and Stengos's (2021) results agree with the general pattern of the literature for the two curves. They found an inverse U curve for the EKC but an increasing, almost linear, curve for the recycling-output plot. This study offers robustness to the results of Kasioumi and Stengos (2021) since the general pattern for the two curves still holds. However, in our case both of the curves decrease and increase in a higher rate than the ones of Kasioumi and Stengos (2021), due to the addition of the habit stock in recycling. In addition, our results contradict the literature which supports that these curves do not exist⁷, while they agree and offer robustness to the literature which support the existence of the curves.

Our results can be interpreted by the Maslow's Hierarchy of Needs (Maslow (1989)), where they explain that everyone have 5 levels of needs that want to satisfy, starting with the most basic ones (like having food and a house), moving on to the more self actualization needs (like having creative activities). Each person can try to achieve the next level of needs only when they have already fulfilled the previous one. All these hold for every single person, so they can also be generalized for the total society and economy as well. Hence, in our case, as output increases and allows the economies to become richer, the basic levels of needs as having production and growth are satisfied, which then allows the economies to move on to the next levels and start achieving some more self fulfillment needs, as recycling.

7 Appendix

In that section we will provide some further information on the solution of the model described in Section 3, as well as some insight on the way we were able to find the Euler equation for consumption (c) and the polluting resource (z). We will show analytically the steps we followed in addition to all formulas used to help us find the differential equations we used to solve our model. From equations 13 and 14, we are able to find λ and μ as well as $e^{\rho t}\lambda$, and by combining them with equations 16 and 17, we are getting back the following equations which helped us determine the Euler equations :

⁷Some of the papers supporting an N shape curve for the EKC or the non existence of the curve are: De Bruyn and Opschoor (1997), Dinda (2004), Harbaugh et al. (2002). The literature studying the relationship between recycling and output is comparatively new and does not consist of many papers, however George et al. (2015) under a theoretical model found that it does not hold.

$$\lambda = \frac{e^{-\rho t} u_c \theta}{\theta - \xi(1 - \phi_z)} \quad (21)$$

or

$$e^{\rho t} \lambda = \frac{u_c \theta}{\theta - \xi(1 - \phi_z)} \quad (22)$$

$$\mu = \frac{e^{-\rho t} u_c (1 - \phi_z)}{\theta - \xi(1 - \phi_z)} \quad (23)$$

$$-\frac{\dot{\lambda}}{\lambda} = \tau\beta(\phi_x - 1) + (1 - \beta)\frac{\mu}{\lambda} + \frac{\tau\beta m\omega[\theta - \xi(1 - \phi_z)]}{e^{-\rho t} u_c \theta} + \frac{\tau\beta u_x[\theta - \xi(1 - \phi_z)]}{u_c \theta} \quad (24)$$

$$\frac{\dot{\mu}}{\lambda} = \frac{\mu}{\lambda} \delta - \frac{u_P[\theta - \xi(1 - \phi_z)]}{u_c \theta} \quad (25)$$

$$-\frac{\dot{\mu}}{\mu} = \frac{u_P[\theta - \xi(1 - \phi_z)]}{u_c(1 - \phi_z)} - \delta \quad (26)$$

$$\frac{\mu}{\lambda} = \frac{1 - \phi_z}{\theta} \quad (27)$$

By doing all the necessary substitution from the above equations, to equation 19, we find the final version of the Euler equation for consumption which is given by:

$$\begin{aligned} \frac{\dot{c}}{c} = & \left(\frac{1}{n}\right) \left(\frac{\theta}{\theta - \xi(1 - \phi_z)}\right) \left[\tau\beta(\phi_x - 1) + \frac{1}{\theta}(1 - \phi_z)(1 - \beta + \xi(\delta + \rho)) - \rho \right] \\ & + \left(\frac{1}{u_{cc}c}\right) \left[\xi U_P - \tau\beta U_x - e^{\rho t} \omega m \tau\beta - U_{cP}[\theta z + (1 - \beta)S + \xi c - \delta P] \right. \\ & \left. - \tau\beta U_{cx}[\phi(\tau\beta S, z) - c - z - \tau\beta S] \right] \end{aligned} \quad (28)$$

Based on the above equation, we can see that the time path of consumption is affected by the variables: pollution (P), production (ϕ), consumption (c), polluting input (z) and waste (S), as well as the marginal product of production with respect to recycling and polluting input, the marginal utility with respect to consumption and the polluting input. In addition, equation 28 is affected by the parameters of the model, that is by the rate at which pollution is created by

using the polluting input in the production procedure (θ), the rate at which the consumption of the final good produces pollution units (ξ), the intensity of recycling (τ), the proportion of the waste stock that can be recycled (β), the rate in which the pollution decays naturally (δ), the time preference parameter (ρ), the shadow price of habit stock (w), the discount rate of past recycling (m) and the elasticity of intertemporal substitution ($1/n$).

Here, we are also able to show a more analytical version of the optimal growth path of the polluting resource. By substituting 15 for μ , 16 and 17 for $\dot{\lambda}$ and $\dot{\mu}$ respectively, 10 for \dot{S} and 21 for λ , on equation 20, we are able to get the following more complicated equation for the growth path of the polluting resource:

$$\dot{z} = \left(\frac{\phi_z - 1}{\phi_{zz}} \right) \left\{ \delta - \frac{u_P \theta}{u_c (1 - \phi_z)} + \frac{U_P \xi}{U_c} + \tau \beta \left[\phi_x - 1 + \frac{wm(\theta - \xi(1 - \phi_z))}{e^{-\rho t} U_c \theta} + \frac{U_x(\theta - \xi(1 - \phi_z))}{U_c \theta} \right] + \frac{(1 - \beta)(1 - \phi_z)}{\theta} \right\} - \frac{\tau \beta \phi_{zx}}{\phi_{zz}} [\phi(\tau \beta S, z) - z - c - \tau \beta S] \quad (29)$$

The low of motion of the polluting resource \dot{z} (equation 29), is affected by similar variables and parameters as the time path of consumption (equation 28). Particularly, the marginal product of production with respect to the polluting resource and the recycling as well as the marginal utility with respect to the polluting input, the recycling level and the consumption, all affect \dot{z} . Furthermore, the polluting input (z), the consumption (c) and the waste (S), also affect \dot{z} . Finally, the following parameters affect our formula too: the rate in which the pollution decays naturally (δ), the rate at which pollution is created by using the polluting input in the production procedure (θ), the rate at which the consumption of the final good produces pollution units (ξ), the intensity of recycling (τ), the proportion of the waste stock that can be recycled (β), the shadow price of habit stock (w) and the discount rate of past recycling (m).

In the following table (Table 1) we present the values of the parameters we used to generate the plots of the initial model. However, our results are robust to various combinations of the parameters values.

Table 1: Parameter values

Parameter	Description	Value
A	technological progress	2
β	recyclable proportion of waste	0.5
γ	weight of the polluting resource in the production function	0.3
δ	regeneration rate of environment	0.3
ϵ	elasticity of utility with respect to pollution	1
θ	pollution units created by the polluting resource	1
ξ	pollution units created by consumption	2
ρ	time preference	0.5
τ	intensity of recycling	4
b	importance of habit stock in utility function	0.5
m	discount rate of past recycling levels	0.5
n	inverse of the elasticity of intertemporal substitution	2
w	shadow price of habit stock	1

References

- Alonso-Carrera, J., Caballé, J. and Raurich, X. (2005), Growth, habit formation, and catching-up with the Joneses, *European Economic Review* **49**(6), 1665–1691.
- Alvarez-Cuadrado, F., Monteiro, G. and Turnovsky, S. J. (2004), Habit formation, catching up with the Joneses, and economic growth, *Journal of economic growth* **9**(1), 47–80.
- Chen, B.-L. (2007), Multiple BGPs in a growth model with habit persistence, *Journal of Money, Credit and Banking* **39**(1), 25–48.
- Cole, M. A., Rayner, A. J. and Bates, J. M. (1997), The environmental Kuznets curve: an empirical analysis, *Environment and development economics* **2**(4), 401–416.
- De Bruyn, S. M. and Opschoor, J. B. (1997), Developments in the throughput-income relationship: theoretical and empirical observations, *Ecological economics* **20**(3), 255–268.
- Di Vita, G. (2001), Technological change, growth and waste recycling, *Energy Economics* **23**(5), 549–567.
- Dinda, S. (2004), Environmental Kuznets curve hypothesis: a survey, *Ecological economics* **49**(4), 431–455.
- Esteve, V. and Tamarit, C. (2012), Threshold cointegration and nonlinear adjustment between CO2 and income: the environmental Kuznets curve in Spain, 1857–2007, *Energy Economics* **34**(6), 2148–2156.
- Gardner, B. and Rebar, A. L. (2019), Habit Formation and behavior change, *Oxford Research Encyclopedia of Psychology*.

- Gardner, B., Lally, P. and Wardle, J. (2012), Making health habitual: the psychology of ‘habit-formation’ and general practice, *British Journal of General Practice* **62**(605), 664–666.
- George, D. A., Lin, B. C.-a. and Chen, Y. (2015), A circular economy model of economic growth, *Environmental modelling & software* **73**, 60–63.
- Gregory, G. D. and Leo, M. D. (2003), Repeated behavior and environmental psychology: the role of personal involvement and habit formation in explaining water consumption 1, *Journal of Applied Social Psychology* **33**(6), 1261–1296.
- Grossman, G. M. and Krueger, A. B. (1991), Environmental impacts of a North American free trade agreement.
- Grossman, G. M. and Krueger, A. B. (1995), Economic growth and the environment, *The quarterly journal of economics* **110**(2), 353–377.
- Harbaugh, W. T., Levinson, A. and Wilson, D. M. (2002), Reexamining the empirical evidence for an environmental Kuznets curve, *Review of Economics and Statistics* **84**(3), 541–551.
- Ikefuji, M. (2008), Habit formation in an endogenous growth model with pollution abatement activities, *Journal of Economics* **94**(3), 241–259.
- Kasioumi, M. and Stengos, T. (2020), The Environmental Kuznets Curve with Recycling: A Partially Linear Semiparametric Approach, *Journal of Risk and Financial Management* **13**(11), 274.
- Kasioumi, M. and Stengos, T. (2021), A Circular Model of Economic Growth and Waste Recycling, *University of Guelph*.
- Lally, P., Van Jaarsveld, C. H., Potts, H. W. and Wardle, J. (2010), How are habits formed: Modelling habit formation in the real world, *European journal of social psychology* **40**(6), 998–1009.
- Löfgren, Å. (2003), Habit formation in the environmental quality: dynamic optimal environmental taxation, *rapport nr.: Working Papers in Economics*.
- Maslow, A. H. (1989), A theory of human motivation, *Readings in managerial psychology* **20**, 20–35.
- Pittel, K. (2006), A Kuznets curve for recycling, *Technical report*, Economics Working Paper Series.
- Roca, J., Padilla, E., Farré, M. and Galletto, V. (2001), Economic growth and atmospheric pollution in Spain: discussing the environmental Kuznets curve hypothesis, *Ecological Economics* **39**(1), 85–99.
- Schumacher, I. and Zou, B. (2006), ” A challenge for intergenerational equity, *Technical report*.
- Selden, T. M. and Song, D. (1995), Neoclassical growth, the J curve for abatement, and the inverted U curve for pollution, *Journal of Environmental Economics and management* **29**(2), 162–168.
- Stern, D. I. (1998), Progress on the environmental Kuznets curve?, *Environment and development economics* **3**(2), 173–196.

Valente, S. (2006), Notes on habit formation and socially optimal growth, *Economics Working Paper Series*.

Wood, W. and Runger, D. (2016), Psychology of habit, *Annual review of psychology* **67**, 289–314.